

MILLING PROMOTION

SQUARE SHOULDER //
SINGLE & DOUBLE-SIDED

DNT-2025-01

DAPRA®



MAJOR SAVINGS on our Best-Selling Line: SQUARE SHOULDER!

When the job requires true 90° shoulder, face, or pocket milling from solid, you need our versatile Square Shoulder family of cutters. With its extreme ramping capability, superior surface finishes, and extended tool life, Square Shoulder delivers significant value in high-volume production and one-off machining.

Now's the time to test Square Shoulder in your shop. Get **FREE** tools with your qualifying insert purchase*, as outlined in this flyer.

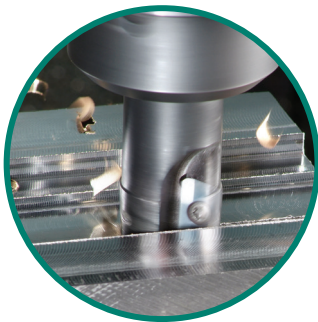
FREE

STEEL END MILLS, SHELL MILLS & MODULAR HEADS

Use promo code **PRO-SS2025**.

* Inserts **must** fit the selected free cutter.

You may mix-and-match edge types, radius, grades and coatings.



Download our Square Shoulder catalog pages for full specifications, speeds and feeds and more.

dapra.com/SScat

Pertains to single-sided and double-sided Square Shoulder product families only.

Promo ends 6/30/2025. Subject to change without notice. See dapra.com/promos for additional terms.



Medical



Aerospace



Automotive



Rail



Oil and Gas



Steel



Stainless



Iron



Face



Shoulder



2D Profile



3D Profile



DAPRA NEXT
TECHNOLOGY



Die & Mold



Power
Generation



Heavy
Industry



General
Engineering



Firearms



Non-Ferrous



Super Alloys



Hardened



Slot



Chamfer



Hole



Pocket

www.DAPRA.COM/PROMOS

(800) 243-3344

info@dapra.com

MILLING PROMOTION

SQUARE SHOULDER //
SINGLE & DOUBLE-SIDED

DNT-2025-01



SQUARE SHOULDER INDEXABLE TOOLING



Download our Square Shoulder catalog pages for full specifications, speeds and feeds and more.
dapra.com/SScat

SINGLE-SIDED INSERT PLATFORM

CUTTER BODIES



END MILLS
1/2" - 1 1/2"



SHELL MILLS
1 1/2" - 8"



MODULAR HEADS
3/4" - 1 1/2"

DOUBLE-SIDED INSERT PLATFORM

CUTTER BODIES



END MILLS
1/2" - 1 1/2"



SHELL MILLS
1 1/2" - 2"



MODULAR HEADS
3/4" - 1 1/4"

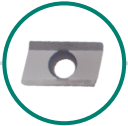
INSERTS – 10MM, 12MM & 16MM IC



APET

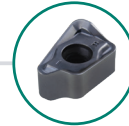


XPET

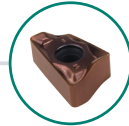


XPET-ALU

INSERTS – 12MM IC



DSS-T



DSS-D

SQUARE SHOULDER CUTTER BODY PART NUMBERING:

SSER0750-2500-R35-2C

PLATFORM	TOOL TYPE	OD	TOOL SPECIFIC	SERIES	# OF FLUTES
SS = Single-Sided DSS = Double-Sided	EM = End Mill ER = Extended-Reach End Mill SM = Shell Mill	0750 = 0.750"	End Mill = Effective Length Shell Mill = Arbor Dia. MOD = Modular	R35 = 10mm R45 = 12mm R55 = 16mm D45 = 12mm	"C" denotes coolant thru tool

SQUARE SHOULDER INSERT PART NUMBERING:

SINGLE-SIDED

APET100308-DMP35-GLH

PLATFORM / EDGE TYPE	SIZE (MM IC)	CORNER RADIUS	GRADE	COATING
APET = Single-Sided, T-Land XPET = Single-Sided, Honed	1003 = 10mm Series 1204 = 12mm // 1605 = 16mm	08 = 0.8mm = 0.031"		

DOUBLE-SIDED

DSS-1208-T-DMK15-HM

PLATFORM	SIZE (MM IC)	CORNER RADIUS	EDGE TYPE	GRADE	COATING
DSS = Double-Sided		08 = 0.8mm = 0.031"	D = Honed T = T-Land		

MILLING PROMOTION

SQUARE SHOULDER //
SINGLE & DOUBLE-SIDED
DNT-2025-01



Single-Sided Insert Platform – 10mm Series

10mm Series Cutter Bodies

Type	EDP	Description	OD	Min. Insert Purchase Required	FREE TOOL SAVINGS	
End Mills	20000C	SSEM0500-0625-R35-1C	.500"	50	\$226.89	
	20010C	SSEM0500-0625-R35-1C-WOF**	.500"	50	\$226.89	
	20020C	SSEM0625-0625-R35-2C	.625"	50	\$193.98	
	20070	SSEM0750-0750-R35-2C	.750"	50	\$228.39	
	20100C	SSEM0750-0750-R35-3C	.750"	50	\$229.54	
	20090C	SSEM0750-0750-R35-3C-WOF**	.750"	50	\$229.54	
	20150C	SSEM1000-0750-R35-4C	1.000"	70	\$316.66	
	20160C	SSEM1000-0750-R35-4C-WOF**	1.000"	70	\$316.66	
	20130	SSEM1000-1000-R35-3C	1.000"	70	\$265.23	
	20140	SSEM1000-1000-R35-3C-WOF**	1.000"	70	\$265.23	
	20230	SSEM1250-1250-R35-5C	1.250"	70	\$337.79	
	20240	SSEM1250-1250-R35-5C-WOF**	1.250"	70	\$337.79	
	Extended-Reach End Mills	20500C	SSER0500-2000-R35-1C	.500"	50	\$205.53
		20510C	SSER0500-2000-R35-1C-WOF**	.500"	50	\$205.53
20520		SSER0625-2500-R35-2C	.625"	50	\$260.95	
20530		SSER0625-2500-R35-2C-WOF**	.625"	50	\$260.95	
20525		SSER0625-3300-R35-2C	.625"	50	\$260.95	
20533C		SSER0625-7000-SS-R35-2C-WOF**	.625"	50	\$397.20	
20540		SSER0750-2500-R35-2C	.750"	50	\$273.54	
20550	SSER0750-4000-R35-2C	.750"	50	\$346.39		
20565C	SSER0750-7000-SS-R35-2C-WOF**	.750"	50	\$397.20		
Mod Head	22400	SSEM0750-MOD-R35-2C	.750"	50	\$233.98	

** Cylindrical shank – no Weldon flats.

10mm Series Inserts

EDP	Description	List Price
27060	XPET100308-DMK25-GLH	\$10.93
27160	XPET100308-DMK30-GLH	\$10.93
27260	XPET100308-DMP30-GLH	\$10.93
27285	XPET100308-DMP30-HM	\$12.05
27360	XPET100308-DMP35-GLH	\$10.93
27385	XPET100308-DMP35-HM	\$12.05
27760	XPET100316-DMP35-GLH	\$10.93
27785	XPET100316-DMP35-HM	\$12.05
29902	XPET100308-ALU-DMK25	\$12.74
29908	XPET100308-ALU-DMK25-GLH	\$14.94
29910	XPET100316-ALU-DMK25	\$12.74
29911	XPET100316-ALU-DMK25-GLH	\$14.94

Don't see the cutter or insert you're looking for? Contact us!

Custom package pricing is available for Carbide Core End Mills, 15° Back-Corner Shell Mills, Chamfering End Mills and Helical Roughing Mills.



Download our Square Shoulder catalog pages for full specifications, speeds and feeds and more.
dapra.com/SScat

Single-Sided Insert Platform – 12mm Series

12mm Series Cutter Bodies

Type	EDP	Description	OD	Min. Insert Purchase Required	FREE TOOL SAVINGS
End Mills	20035	SSEM0625-0625-R45-1C	.625"	50	\$203.39
	20105	SSEM0750-0750-R45-2C	.750"	50	\$233.24
	20107	SSEM0750-0750-R45-2LC	.750"	50	\$253.33
	20169	SSEM1000-1000-R45-3SC	1.000"	70	\$270.01
	20165	SSEM1000-1000-R45-3C	1.000"	70	\$278.32
	20166	SSEM1000-1000-R45-3C-WOF**	1.000"	70	\$270.19
	20167	SSEM1000-1000-R45-3LC	1.000"	70	\$286.64
	20245	SSEM1250-1250-R45-4C	1.250"	70	\$324.68
	20247	SSEM1250-1250-R45-4LC	1.250"	70	\$335.43
20295	SSEM1500-1250-R45-5C	1.500"	70	\$355.63	
Extended-Reach End Mills	20535	SSER0625-7000-SS-R45-1C-WOF**	.625"	50	\$346.11
	20567	SSER0750-7000-SS-R45-2C-WOF**	.750"	50	\$371.10
	20603	SSER1000-9000-SS-R45-2C-WOF**	1.000"	70	\$407.94
	20612	SSER1250-10000-SS-R45-2C-WOF**	1.250"	70	\$481.66
Shell Mills	20890	SSSM1500-0750-R45-5C	1.500"	50	\$457.87
	20913	SSSM2000-0750-R45-5C	2.000"	50	\$499.50
	20915	SSSM2000-0750-R45-7C	2.000"	70	\$517.28
	20945	SSSM2500-1000-R45-8C	2.500"	80	\$585.17
	20955	SSSM3000-1000-R45-7C	3.000"	70	\$568.49
	20957	SSSM3000-1000-R45-10C	3.000"	100	\$700.53
	20965	SSSM4000-1500-R45-12	4.000"	120	\$761.14
Modular Heads	22405	SSEM0750-MOD-R45-2C	.750"	50	\$263.08
	22407	SSEM1000-MOD-R45-3C	1.000"	70	\$289.76
	22415	SSEM1250-MOD-R45-4C	1.250"	70	\$341.89

** Cylindrical shank – no Weldon flats.

Don't see the cutter or insert you're looking for? Contact us!

Custom package pricing is available for Carbide Core End Mills, 15° Back-Corner Shell Mills, Chamfering End Mills and Helical Roughing Mills.

12mm Series Inserts

EDP	Description	List Price
30560	APET120408-DMK25-GLH	\$11.48
30585	APET120408-DMK25-HM	\$12.96
30760	APET120408-DMP30-GLH	\$11.48
30785	APET120408-DMP30-HM	\$12.96
30790	APET120408-DMP30-TCI	\$11.48
30860	APET120408-DMP35-GLH	\$11.48
30890	APET120408-DMP35-TCI	\$11.48
30985	APET120416-DMK25-HM	\$12.96
31160	APET120416-DMP30-GLH	\$11.48
31185	APET120416-DMP30-HM	\$12.96
31190	APET120416-DMP30-TCI	\$11.48
31260	APET120416-DMP35-GLH	\$11.48
31285	APET120416-DMP35-HM	\$12.96
31290	APET120416-DMP35-TCI	\$11.48
31360	APET120431-DMK25-GLH	\$11.48
31560	APET120431-DMP30-GLH	\$11.48
31690	APET120431-DMP35-TCI	\$11.48
32010	XPET120408-ALU-DMK25	\$13.91
32025	XPET120408-ALU-DMK25-GLH	\$16.30
32160	XPET120408-DMK25-GLH	\$12.08
32201	XPET120408-DMK35-HM	\$12.65
32360	XPET120408-DMP30-GLH	\$12.08
32385	XPET120408-DMP30-HM	\$12.65
32460	XPET120408-DMP35-GLH	\$12.08
32485	XPET120408-DMP35-HM	\$12.65
32490	XPET120408-DMP35-TCI	\$12.08
32600	XPET120416-ALU-DMK25	\$13.91
32615	XPET120416-ALU-DMK25-GLH	\$16.30
32641	XPET120416-DMK35-HM	\$12.65
32642	XPET120416-DMK35-IN	\$13.25
32760	XPET120416-DMP30-GLH	\$12.08
32790	XPET120416-DMP30-TCI	\$12.08
32860	XPET120416-DMP35-GLH	\$12.08
33000	XPET120431-ALU-DMK25	\$13.91
33015	XPET120431-ALU-DMK25-GLH	\$16.30



Download our Square Shoulder catalog pages for full specifications, speeds and feeds and more.
dapra.com/SScat

Single-Sided Insert Platform – 16mm Series

16mm Series Cutter Bodies

Type	EDP	Description	OD	Min. Insert Purchase Required	FREE TOOL SAVINGS
End Mills	20040C	SSEM0625-0750-R55-1C	.625"	50	\$185.29
	20050	SSEM0625-0750-R55-1-WOF**	.625"	50	\$185.29
	20110C	SSEM0750-0750-R55-1C	.750"	50	\$186.77
	20190	SSEM1000-1000-R55-2C	1.000"	70	\$248.60
	20220	SSEM1000-1000-R55-2C-WOF**	1.000"	70	\$254.54
	20210	SSEM1000-1000-R55-2LC	1.000"	70	\$254.54
	20270	SSEM1250-1250-R55-3C	1.250"	70	\$286.64
	20280	SSEM1250-1250-R55-3C-WOF**	1.250"	70	\$286.64
	20300C	SSEM1500-1250-R55-3C	1.500"	70	\$322.14
	20320	SSEM1500-1250-R55-4C	1.500"	70	\$318.74
Extended-Reach End Mills	20570	SSER1000-4000-R55-2C	1.000"	70	\$327.05
	20580	SSER1000-4000-R55-2C-WOF**	1.000"	70	\$327.05
	20590	SSER1000-6000-R55-2C	1.000"	70	\$362.73
	20610	SSER1250-4000-R55-3C	1.250"	70	\$374.62
	20620	SSER1500-4000-R55-3C	1.500"	70	\$434.09
Shell Mills	20905	SSSM1500-0750-R55-4C	1.500"	50	\$398.41
	21020	SSSM2000-0750-R55-3C	2.000"	50	\$379.41
	20930	SSSM2000-0750-R55-4C	2.000"	50	\$398.35
	20940	SSSM2000-0750-R55-5C	2.000"	50	\$421.44
	20950	SSSM2500-1000-R55-5C	2.500"	50	\$445.98
	21040	SSSM3000-1000-R55-3C	3.000"	60	\$451.93
	20960	SSSM3000-1000-R55-6C	3.000"	70	\$484.08
	20970C	SSSM4000-1500-R55-8C	4.000"	90	\$696.23
	20980	SSSM5000-1500-R55-8	5.000"	100	\$712.41
	20990	SSSM6000-2000-R55-7	6.000"	120	\$752.88
Metric Shell Mills	21000	SSSM8000-FM-R55-9	8.000"	150	\$941.03
	22105	SSSM50-22-R55-4C	50mm	50	\$354.47
Modular Heads	22130	SSSM80-27-R55-6	80mm	60	\$336.00
	22410	SSEM1000-MOD-R55-2C	1.000"	70	\$334.61
	22420	SSEM1250-MOD-R55-2C	1.250"	70	\$347.95
	22430	SSEM1500-MOD-R55-2C	1.500"	70	\$361.29

** Cylindrical shank – no Weldon flats.

16mm Series Inserts

EDP	Description	List Price
25660	APET160408-DMK25-GLH	\$12.27
25685	APET160408-DMK25-HM	\$14.50
25690	APET160408-DMK25-TCI	\$12.67
25760	APET160408-DMP30-GLH	\$12.27
25785	APET160408-DMP30-HM	\$14.50
25790	APET160408-DMP30-TCI	\$12.67
25860	APET160408-DMP35-GLH	\$12.27
25885	APET160408-DMP35-HM	\$14.50
25890	APET160408-DMP35-TCI	\$12.67
26060	APET160412-DMP30-GLH	\$12.27
26085	APET160412-DMP30-HM	\$14.50
26160	APET160412-DMP35-GLH	\$12.27
26260	APET160416-DMK25-GLH	\$12.27
26285	APET160416-DMK25-HM	\$14.50
26290	APET160416-DMK25-TCI	\$12.67
26360	APET160416-DMP30-GLH	\$12.27
26385	APET160416-DMP30-HM	\$14.50
26390	APET160416-DMP30-TCI	\$12.67
26460	APET160416-DMP35-GLH	\$12.27
26485	APET160416-DMP35-HM	\$14.50
26490	APET160416-DMP35-TCI	\$12.67
26560	APET160431-DMK25-GLH	\$12.27
26585	APET160431-DMK25-HM	\$14.50
26660	APET160431-DMP30-GLH	\$12.27
26685	APET160431-DMP30-HM	\$14.50
26690	APET160431-DMP30-TCI	\$12.67
26760	APET160431-DMP35-GLH	\$12.27
26790	APET160431-DMP35-TCI	\$12.67
27960	XPET160404-DMP30-GLH	\$13.23
28060	XPET160404-DMP35-GLH	\$13.23
28085	XPET160404-DMP35-HM	\$13.77
28184	XPET160408-DMK35-HM	\$13.77
28260	XPET160408-DMK30-GLH	\$13.23
28360	XPET160408-DMP30-GLH	\$13.23
28385	XPET160408-DMP30-HM	\$13.77
28390	XPET160408-DMP30-TCI	\$13.65
28460	XPET160408-DMP35-GLH	\$13.23
28485	XPET160408-DMP35-HM	\$13.77
28490	XPET160408-DMP35-TCI	\$13.65
28760	XPET160412-DMP30-GLH	\$13.23
28860	XPET160412-DMP35-GLH	\$13.23
28960	XPET160416-DMK25-GLH	\$13.23
28985	XPET160416-DMK25-HM	\$13.77
29084	XPET160416-DMK35-HM	\$13.77
29085	XPET160416-DMK35-IN	\$15.61
29160	XPET160416-DMP30-GLH	\$13.23
29260	XPET160416-DMP35-GLH	\$13.23
29285	XPET160416-DMP35-HM	\$13.77
29460	XPET160424-DMP35-GLH	\$13.23
29660	XPET160431-DMK30-GLH	\$13.23
29760	XPET160431-DMP30-GLH	\$13.23
29860	XPET160431-DMP35-GLH	\$13.23
29885	XPET160431-DMP35-HM	\$13.77
29912	XPET160404-ALU-DMK25	\$14.46
29914	XPET160404-ALU-DMK25-GLH	\$19.01
29916	XPET160408-ALU-DMK25	\$14.46
29921	XPET160408-ALU-DMK25-GLH	\$19.01
29924	XPET160412-ALU-DMK25	\$14.46
29928	XPET160412-ALU-DMK25-GLH	\$19.01
29932	XPET160416-ALU-DMK25	\$14.46
29936	XPET160416-ALU-DMK25-GLH	\$19.01
29940	XPET160431-ALU-DMK25	\$14.46
29948	XPET160431-ALU-DMK25-GLH	\$19.01

Don't see the cutter or insert you're looking for? Contact us!

Custom package pricing is available for Carbide Core End Mills, 15° Back-Corner Shell Mills, Chamfering End Mills and Helical Roughing Mills.



Download our Square Shoulder catalog pages for full specifications, speeds and feeds and more.
dapra.com/SScat

Double-Sided Insert Platform – 12mm Series

12mm Series Cutter Bodies

Type	EDP	Description	OD	Min. Insert Purchase Required	FREE TOOL SAVINGS
End Mills	33300	DSSEM-1000-1000-D45-2C	1.000"	70	\$258.64
	33305	DSSEM-1000-1000-D45-2LC	1.000"	70	\$264.25
	33310	DSSEM-1000-1000-D45-3C	1.000"	70	\$267.88
	33315	DSSEM-1000-1000-D45-3LC	1.000"	70	\$282.17
	33325	DSSEM-1250-1250-D45-4C	1.250"	70	\$357.17
	33330	DSSEM-1250-1250-D45-4LC	1.250"	70	\$371.46
	33335	DSSEM-1500-1250-D45-4C	1.500"	70	\$377.18
Shell Mills	33400	DSSSM-1500-0750-D45-5C	1.500"	50	\$435.26
	33405	DSSSM-2000-0750-D45-5C	2.000"	50	\$532.12
	33410	DSSSM-2500-1000-D45-6C	2.500"	60	\$578.64
	33415	DSSSM-3000-1000-D45-6C	3.000"	60	\$578.64
	33420	DSSSM-4000-1500-D45-8C	4.000"	80	\$756.89
	33425	DSSSM-5000-1500-D45-9	5.000"	90	\$675.08
	33430	DSSSM-6000-2000-D45-10	6.000"	100	\$735.78
Modular Heads	33485	DSSEM-1000-MOD-D45-2C	1.000"	70	\$292.84
	33490	DSSEM-1000-MOD-D45-3C	1.000"	70	\$324.95
	33495	DSSEM-1250-MOD-D45-4C	1.250"	70	\$385.76

12mm Series Inserts

EDP	Description	List Price
33565	DSS-1208-D-DMK35-HM	\$19.05
33592	DSS-1208-D-DMK30-HM	\$19.05
33597	DSS-1216-D-DMK30-HM	\$19.05
33645	DSS-1216-D-DMK35-IN	\$21.09
33765	DSS-1208-T-DMK30-HM	\$19.05
33865	DSS-1208-T-DMP25-HM	\$19.05
33885	DSS-1208-T-DMP25-TS	\$19.05
33965	DSS-1208-T-DMK15-HM	\$19.05
34065	DSS-1216-T-DMK30-HM	\$19.05
34165	DSS-1216-T-DMP25-HM	\$19.05
34265	DSS-1216-T-DMK15-HM	\$19.05
34285	DSS-1216-T-DMK15-TS	\$19.05

Don't see the cutter or insert you're looking for? Contact us!
 Custom package pricing is available for Carbide Core End Mills.



Download our Square Shoulder catalog pages for full specifications, speeds and feeds and more.
dapra.com/SScat